

## Castle Building



1410 Stanley

Strategically located in downtown Montreal at the intersection of Stanley and Ste-Catherine West Streets, the Castle Building provides excellent alternatives for small to medium size office space requirements.

Important renovations have made this elegant building a top location for companies looking for the advantages of a Downtown Montreal address.

LES GESTIONS  
CHATEAU D'OR LTÉE



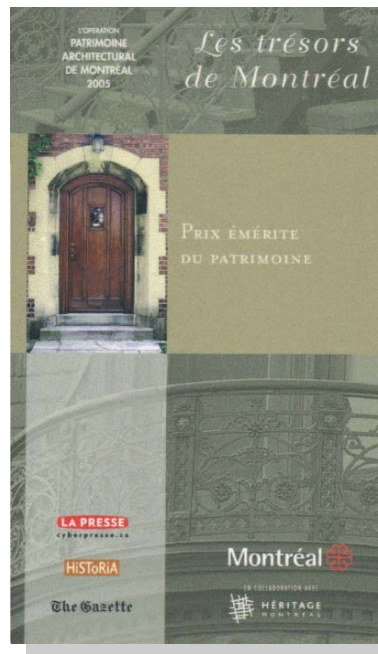
GOLD CASTLE  
HOLDINGS LIMITED

## Holder of Montreal's

### "Heritage Emeritus Award"

Every year, the city of Montreal and the Fondation Héritage Montreal pay tribute to those who maintain or restore their properties while keeping their original charm. Through the Montreal Architectural Heritage Campaign, the city acknowledges our effort and contributions in preserving and enhancing our heritage while orderly developing the city.

The Castle Building is a proud holder of a Heritage Emeritus Award for the year 2005. *"Witness to the early days of this business district, The Castle Building's considerable size and careful maintenance, adds elegance to this major intersection of Sainte-Catherine Street."*



## Details

- Year of construction: 1927
- Year renovated: 1990-2005
- Number of Floors: 11

## Building Features

- **Heating and Air Conditioning**

Top quality HVAC system on each floor gives the tenants control of use all year round.

- **Electricity**

Power entry of 2,000 KVA with standby line.  
Emergency generator to supply essential services.

- **Security**

CCTV on tape at all access points and corridors.  
Automated access control system after business hours.

Supervised state-of-the-art fire alarm system panel in lobby capable of immediately detecting and locating any alarm.

Advanced sprinkler system on all floors.

- **Handicapped access**

Full wheelchair access with motorized doors and switches. Adapted washrooms.

- **Elevators**

Two-high speed automatic passenger elevators.

- **Freight elevators and Loading Dock**

One freight elevator and loading dock.

- **Telecommunications**

Optic fibre service from major suppliers.

- **Management and Maintenance**

At least one employee in the building 24 hours a day 7 days a week.



## Building Access

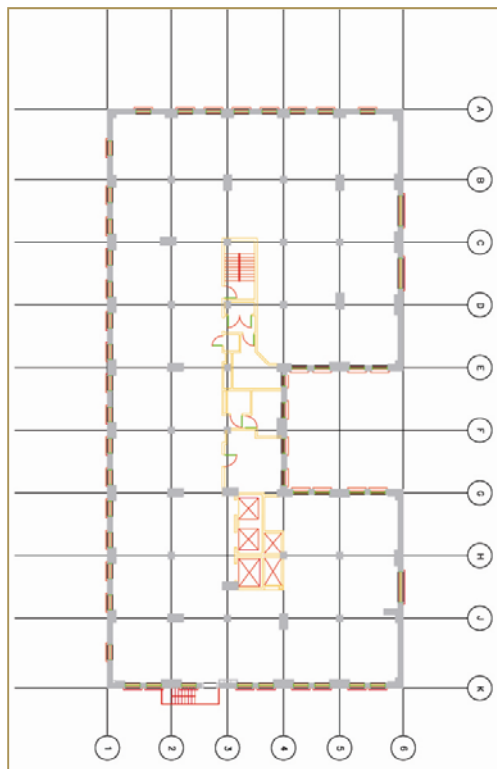
Located across the street from the Peel metro station (Green line).

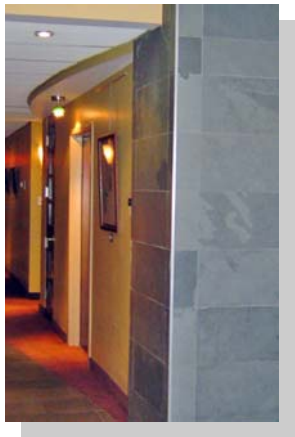
Just a few blocks away from La Gare Centrale.

Easy access to the underground pedestrian network.

## Typical Floor Plan

The Castle Building's floor plan, with its abundance of windows, provides a wide array of possibilities for different office space requirements.







## Location Map

Castle Building / Peel Metro Station



**Excellent Downtown location**

**For leasing enquiries please contact:**

David Gold  
1410 Stanley, suite 600  
Montreal , Quebec H3A 1P8  
☎ (514) 842-2966  
📠 (514) 842-9339  
✉ [dg@goldcastle.net](mailto:dg@goldcastle.net)  
[www.goldcastle.net](http://www.goldcastle.net)